

Boat overview

[Update image gallery](#)

[Update boat overview](#)

[Update boat characteristics](#)

View

[- Image gallery](#)

[- Boat overview](#)

[- Boat characteristics](#)

Documents

[Add document](#)

View

[+ Documents](#)

Configuration

[Add component](#)

[Add subcomponent](#)

View

[+ All categories](#)

[- Hull](#)

[+ Keel](#)

[+ Deck and fittings](#)

[+ Engine and drivetrain](#)

[+ Steering system](#)

[+ Mast and spars](#)

[+ Standing Rigging](#)

[+ Running Rigging](#)

[- Sails](#)

[+ Ground tackle](#)

[+ Electrical installation](#)

[+ Navigation and Instrumentation](#)

[+ Thrusters](#)

[+ Navigation lights and signals](#)

[+ VHF Radio and communication](#)

[+ PC and software](#)

[+ Heating system](#)

[+ Interior](#)

[+ Heads and waste](#)

[+ Drinking water system](#)

[+ Accomodation](#)

[+ Galley](#)

[+ Safety](#)

Maintenance

[Add activity](#)

View

[+ Maintenance activities](#)

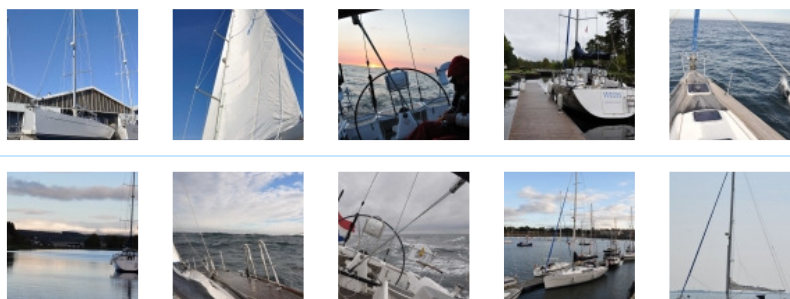
[> Maintenance plan](#)

[Cancel](#)



CONFIGURE YOUR BOAT - WISH

Boat name : WISH



Type	Sailing Yacht
Manufacturer	WAUQUIEZ
Model	CENTURION 45S S/D
Year	2003
Home port	Hindeloopen, NL
Call sign	PB2207
Material type	Polyester
Craft Identification Number - CIN (or HIN)	FR-WAU450051203
Length Over All (LOA)	13.7 m
Beam	4.1 m
Draft	1.95 m
Height	20 m
Displacement	12 t
Description	Built in 2003 and displayed at boat shows then launched 2005. Sailing area mainly North Sea, UK, Norway and France Atlantic coast. This profile can be used as a reference test for a yacht equipped for offshore sailing
Public overview	Visable
Enable use as test profile	Boat available as reference
CE / ISO 12215 Certification	A (8 People)
Rigging Plan	
	I 16.8 m
	J 5.4 m
	P 15.6 m
	E 5.9 m
	Sail number 8987T (GBR)
	Standing rigging Wire
Mechanical	
	Number of engines 1
	Engine Power (total) 75 hp
	Fuel capacity 235 Litres
	Fuel Diesel
Water capacity	500 Litres
Angle of vanishing stability	140 °
Ballast	4.05 t
	Ballast ratio 39 %



© 2011 - all rights reserved. YACHTONUS®
is an AXVECO company.

Hull											
				Name	Make	Type	Built	Inspected	Usage		
				Hull	Wauquiez	Centurion 45S	04-2003	12-2010	8 Years		
				Hull - exterior above waterline	Wauquiez	Centurion 45s	01-2003	01-2011	8 Years		
				Hull - exterior below waterline	Wauquiez	Centurion 45S	01-2003	03-2011	8 Years		
				Transom	Wauquiez	Centurion 45S	01-2003	05-2011	8 Years		
				Bilge	Wauquiez	Centurion 45S	01-2003	02-2011	8 Years		
				Bilge pump - electric	JABSCO	Hydro air 59400-0012	01-2003	03-2011	8 Years		
				Bilge pump - manual	JABSCO	Hand operated pump	01-2003	10-2010	8 Years		
				Anodes and cathodic protection	VETUS	not known	01-2003	01-2010	6 Years		

Sails											
				Name	Make	Type	Built	Inspected	Usage		
				Mainsail - fully battened	North Sails	Dyneema SRP Sandwich	01-2005	03-2011	6 Years		
				Genoa I	North Sails	135% Dyneema SRP	06-2005	04-2011	6 Years		
				Genoa II or High Aspect Jib	North Sails	98% Dyneema SRP Sandwich	03-2009	01-2011	2 Years		
				Genoa III or Working Jib	North Sails	85% Dyneema SRP Sandwich	03-2009	01-2011	2 Years		
				Spinnaker - asymmetric	North Sails	Asymmetric	01-2005	06-2011	6 Years		
				Snuffer	North Sails	Snuffer	01-2003	09-2010	7 Years		

[English](#)
 [Deutsch](#)
 [Français](#)
 [Español](#)
 [Italiano](#)
 [Nederlands](#)



[Terms and conditions](#)

[How it works](#)

[Philosophy](#)

[PRESS Office](#)

[Notes for usage](#)

[Who is behind YACHTONUS](#)

[Contact Us](#)

[Find or Translate Components](#)